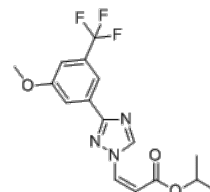


Product Name : KPT-185
Cat. No. : PC-49221
CAS No. : 1333151-73-7
Molecular Formula : C₁₆H₁₆F₃N₃O₃
Molecular Weight : 355.317
Target : Exportin-1 (CRM1,XPO1)
Solubility : 10 mM in DMSO



Biological Activity

KPT-185 (KPT185) is a potent, selective inhibitor of nuclear export (SINE) that irreversibly bind to **CRM1** and block the function of this protein, shows antileukemic activity in vitro and in vivo in acute myeloid leukemia (AML).

KPT-185 inhibits a panel of AML cell lines proliferation (MV4-11, Kasumi-1, OCI/AML3, MOLM-13, KG1a, and THP-1) with IC₅₀ of 100-500 nM.

KPT-185 decreases CRM1 protein level and accumulates CRM1 cargo proteins in the nucleus.

KPT-185 induces differentiation of AML cell lines.

References

Ranganathan P, et al. *Blood*. 2012 Aug 30;120(9):1765-73.

Zhang K, et al. *Exp Hematol*. 2013 Jan;41(1):67-78.e4.

Caution: Product has not been fully validated for medical applications. Lab Use Only!

E-mail: tech@probechem.com